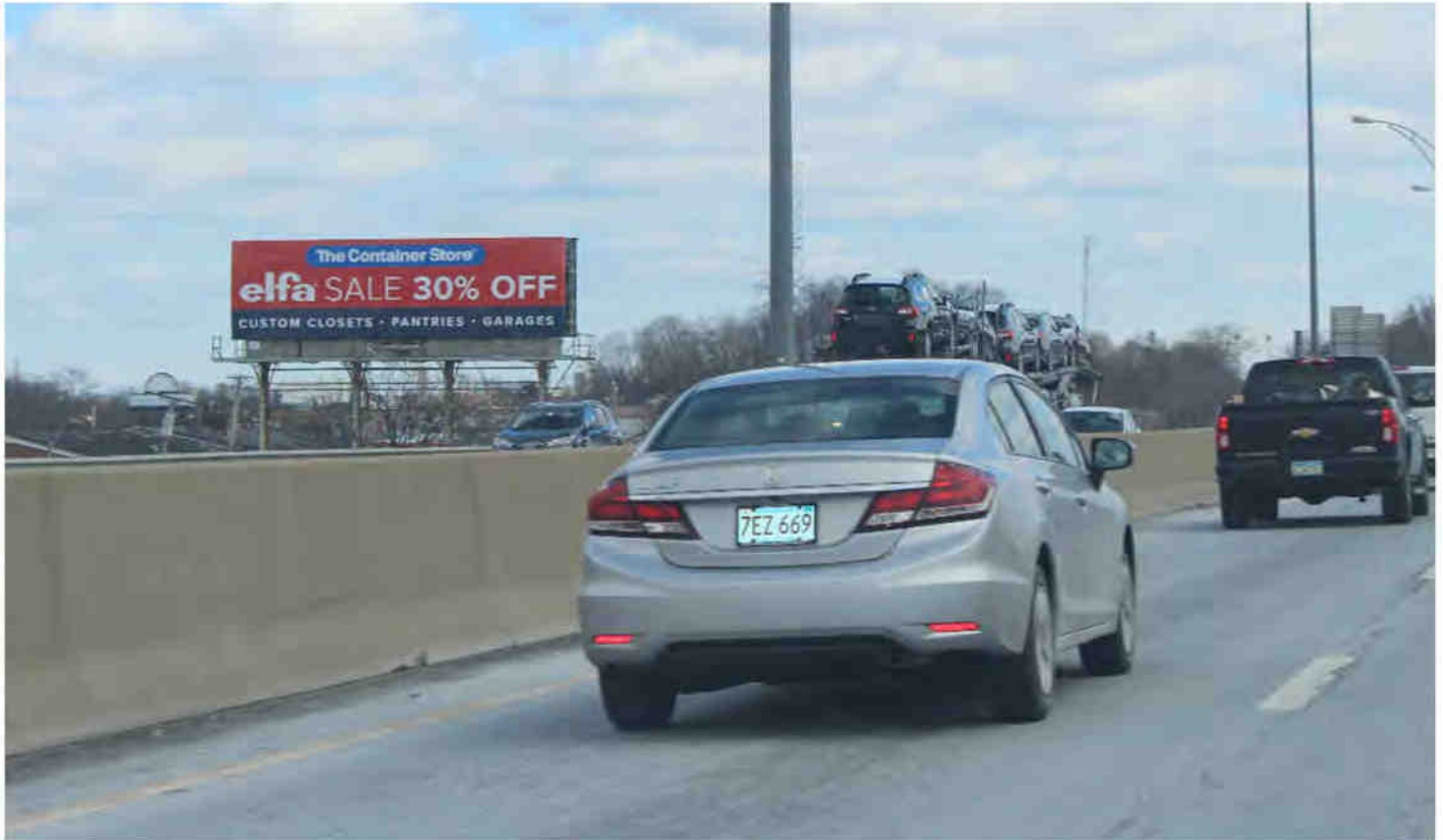


CARROLL

Advertising LLC

415 Neponset Avenue, Dorchester, MA 02122 Tell: (617)282-2100 Fax: (617)282-2040

MA #9 - Route I-90 (The Mass. Pike) W/O Allston/Brighton/Cambridge Exit (#18)



description

Extensive left hand read that connects with traffic originating from the affluent Metro-West Boston suburbs (Newton/Weston/Wellesley) and points further west (Framingham/Natick). Seen heading East on The Mass Pike into Downtown Boston. Located one mile west of Exit #18- which is Allston Brighton (Commonwealth Avenue) and Cambridge (Storrow Drive) Exit. One and a half miles from Fenway Park, and local college traffic such as Boston University, Harvard, and Northeastern.

details

Location: I-90 (The Mass. Pike) W/O Allston/Brighton/Cambridge Exit (#18)

Size: 14x48

Direction: facing: West

Weekly Impressions: 745,340

Latitude: 42.358135

Longitude: -71.157435

TAB ID # 30858658



Advertising Company, Inc.

415 Neponset Avenue, Dorchester, MA 02122 Tell: (617)282-2100 Fax: (617)282-2040

MA #14 - Route 1, N/O I-95 N/S ON Ramps (F/N)- Sharon/Walpole, Massachusetts



description

Outstanding long left-hand approach seen by traffic headed north on Route 1- towards the towns of Walpole, Norwood, and Westwood. This board is approximately one third of a mile south of the heavily congested area at the Route 1 and Route 27 Junction, and major 4-way stoplight. It's also less than one mile north of the I-95 North and South On - Ramps "Roundabout". Traffic passing this billboard is headed towards the most heavy retail area on Route 1, such as Walpole Mall, Norwood Auto Mile, and several major supermarkets such as Big Y, Stop & Shop, and Shaw's.

details

Location: Route 1, N/O I-95 N/S ON Ramps (F/N)- Sharon/Walpole, Massachusetts

Size: 14x48 STATIC BULLETIN

Direction facing: South

Weekly Impressions: (18+) 123, 559

Illumination: Yes

Latitude: 42.108203

Longitude: -71.248105

TAB ID # 30982870



Advertising Company, Inc.

1022 Morrissey Boulevard, Boston, MA 02122 Tell: (617)282-2100 Fax: 617-282-2040

MA#15 - Route 1, N/O I-95 N/S ON Ramps (F/N) - Sharon/Walpole, Massachusetts



description

Sensational long right hand read and hand approach, seen by traffic headed south on Route 1- towards I-95 N/S On Ramps, and The Sharon "Roundabout" Walpole. Exactly one mile north of I-95 Junction. This board is approximately one third of a mile south of the heavily congested area at the Route 1 and Route 27 Junction, and major 4-way stoplight. Traffic passing this billboard is headed towards Gillette Stadium/ Patriot Place , and I-495. Traffic originating from towns of Norwood, Walpole, Foxboro, and Sharon, as well as Walpole Mall, Norwood Auto Mile, several major supermarkets such as Big Y, Stop & Shop, and Shaw's pass this location.

details

Location: Route 1, N/O I-95 N/S ON Ramps (F/N)- Sharon/Walpole, Massachusetts

Size: 14x48 STATIC BULLETIN

Direction facing: North

Weekly Impressions: (18+) 106,700

Illumination: Yes

Latitude: 42.136045

Longitude: -71.221993

TAB ID # 30982871



Advertising LLC

415 Neponset Avenue, Dorchester, MA 02122 Tell: (617)282-2100 Fax: (617)282-2040

MA#18 I-290 @ Shrewsbury Street (F/E) Worcester, MA



description

Extensive, long straight left hand approach. Board is seen heading West on I-290 -towards the Mass.Pike and Route 146. Board located in the heart of Downtown Worcester. Within a half-mile of the exitfor The DCU Center, and 1.1 miles from the Junction of I-290 and I-190.

details

Location: 1-290 @ Shrewsbury Street, Worcester, MA

Size: 14x48 feet

Weekly Impressions: 538,859 (18+)

Direction facing: East

Illumination: Yes

Latitude: 42.259156

Longitude: -71.79267

TAB # 30753159

CARROLL

Advertising LLC

415 Neponset Avenue, Dorchester, MA 02122 Tell: (617)282-2100 Fax: (617)282-2040

MA# 19 I-290 W/O Shrewsbury Street (F/W)



description

Outstanding, long right hand read located in the heart of Downtown Worcester. Board is seen by traffic heading East on I-290, approximately 1.1 miles West of the Junction of I-290 and I-190. Located just before the exit for Shrewsbury Street, one of the most culturally diverse streets in all of Worcester, and Exit # 16, which leads to all points Downtown, the DCU Center, and Highland Avenue..

details

Location: I-290 W/O Shrewsbury Street (F/W)

Size: 14x48 Static Bulletin

Weekly Impression: 676, 122 (18+)

Facing: West

Illumination: Yes

Latitude: 42.259156

Longitude: -71.79267

TAB ID # 30753160